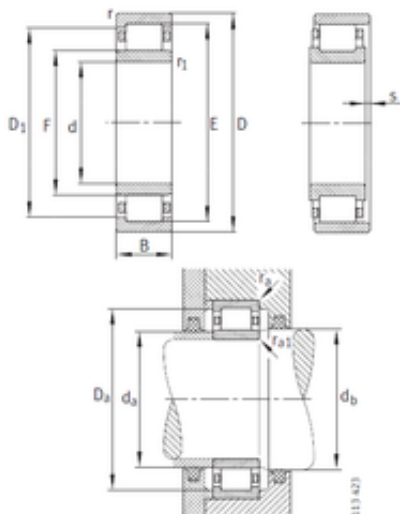




## Bearing Import and Export Co., Ltd.



### 360 mm x 650 mm x 170 mm FAG NU2272-E-M1 Cylindrical roller bearings with cage

Bearing No. NU2272-E-M1

Bore Diameter	360 mm
Outer Diameter	650 mm
d	360 mm
F	428 mm
D	650 mm
E	588 mm
B	170 mm
C	170 mm
ra1 max.	5 mm
r min.	6 mm
r1 min.	6 mm
D1	562 mm
da min.	386 mm
da max	424 mm
Da max.	624 mm
db min	432 mm
ra max.	5 mm
S	15 mm
Weight	254 Kg
Basic dynamic load rating (C)	3600 kN
Basic static load rating (C0)	5700 kN
Fatigue load limit (Pu)	520
Reference speed	520 r/min

NU2272-E-M1 Bearing 2D drawings and 3D CAD models